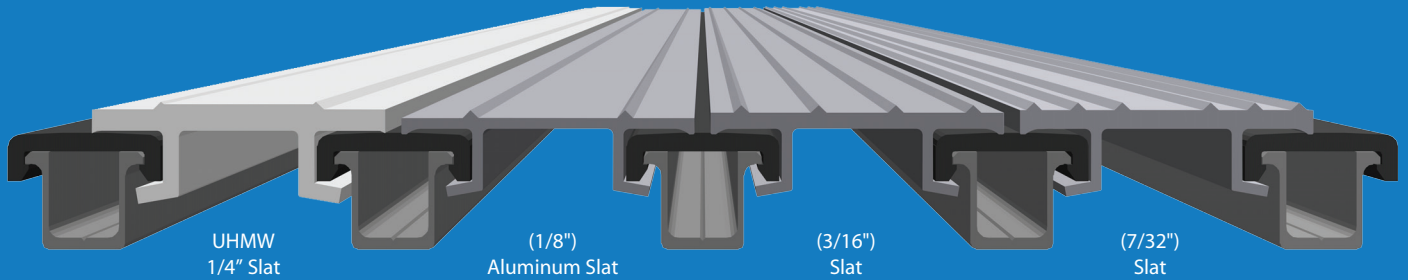




CHOOSING THE RIGHT FLOOR

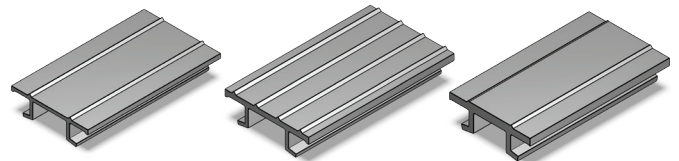


KEITH® WALKING FLOOR® systems are available in a wide range of profiles and thicknesses to address the vast number of applications that are in use worldwide. A general description of uses, applications, and benefits to each system is below.

- Light weight
- No floor seal
- Full length bearing
- Full length hold-down

- Used for agricultural, commodity, biomass, mulch, and wood products
- Available in thicknesses ranging from 1/8" to 7/32" and UHMW

PS+™ PRESSURE SEAL®

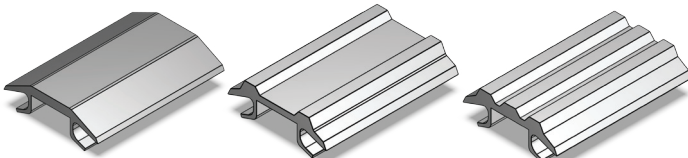


2701

2703

2699

V-18 SERIES



2651

2654

2692

- Full length hold-down
- Full length bearing strip
- Leak resistant
- No floor seal

- Used for MSW, biomass, light to moderate C&D
- Available in thicknesses ranging from 3/16" to 1/2" triple ridge

(Note: Steel overlay needed when hauling highly abrasive materials.)

- Heavy abrasion applications (Steel Slat only)
- Full length bearing strip
- Leak resistant
- No floor seal

- Aluminum V-9 Slat typically used for MSW, recyclables, and light C&D
- Steel V-9 Slat designed for use in heavy C&D, scrap metal, aggregate, and asphalt

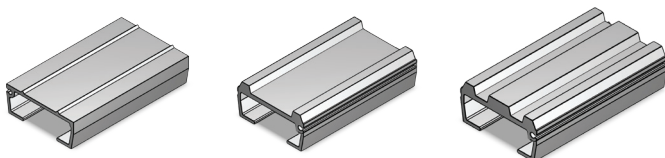
V-9 SERIES



STEEL
5661701

ALUMINUM
2531

STANDARD/IMPACT™



2185

2295

2299

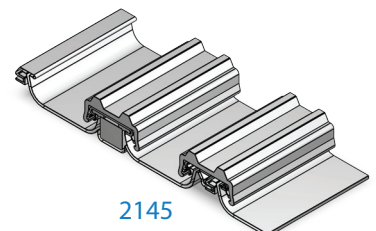
- Original WALKING FLOOR® slat profile
- Wide range of profile types
- Interchangeable slat designs

- Used for shredded paper, MSW, recyclables, biofuels, and light to moderate C&D, wood forest products
- Available in thicknesses ranging from 1/8" to 3/4" triple ridge

- Designed for high moisture loads.
- Can hold 12" of standing water
- Front mount drive
- Full length bearing strip
- Full length hold-down

- Used for MSW, medical waste and silage

LEAKPROOF (LPIII)

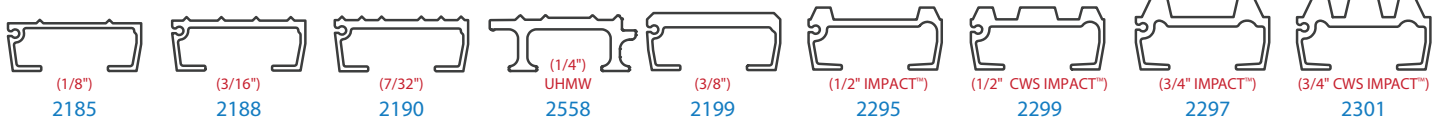


2145

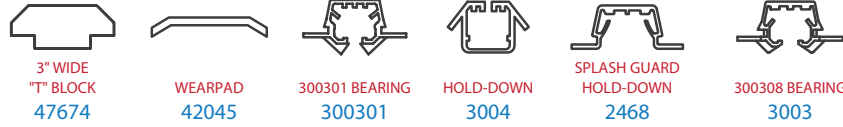
MOBILE APPLICATIONS

COMMON FLOORING AND COMPONENTS

STANDARD 3.5" SLATS



BEARINGS



SEAL



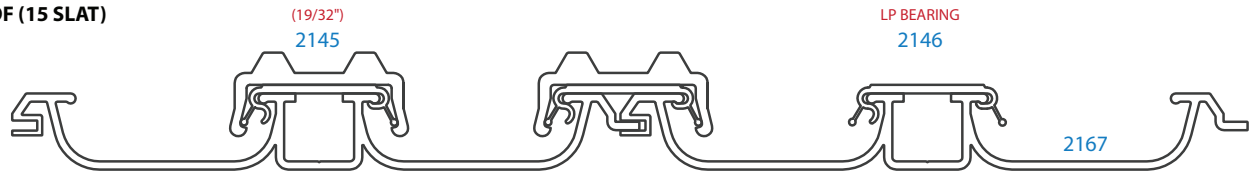
SUBDECK



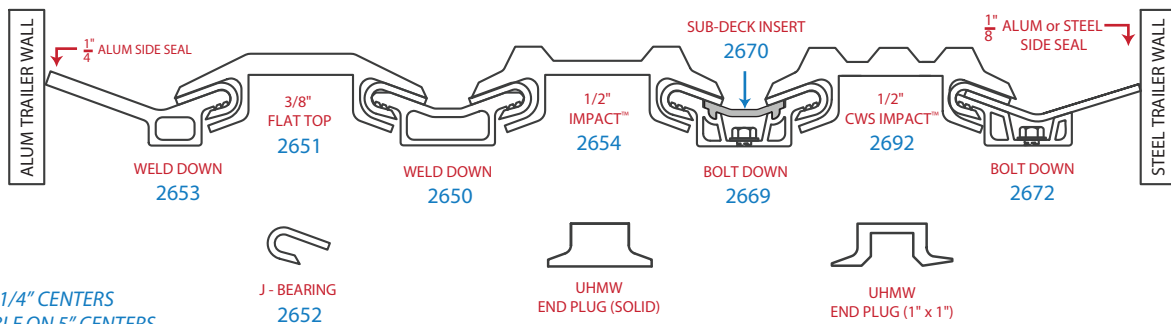
PS+™ PRESSURE SEAL®



LEAK PROOF (15 SLAT)

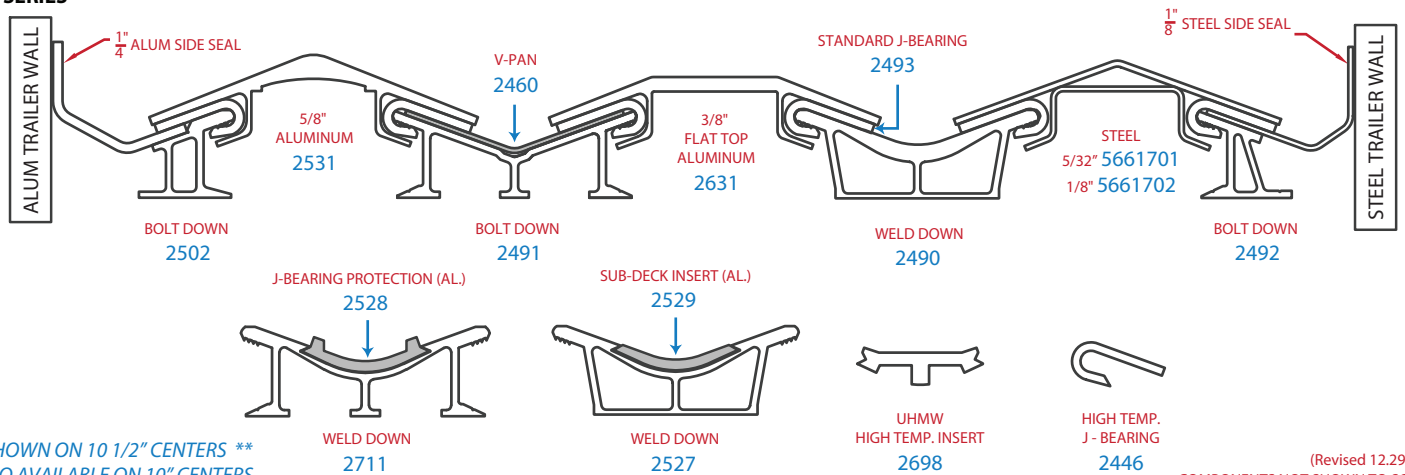


V-18 SERIES



**SHOWN ON 5 1/4" CENTERS
**ALSO AVAILABLE ON 5" CENTERS

V-9 SERIES



**SHOWN ON 10 1/2" CENTERS **
ALSO AVAILABLE ON 10" CENTERS

(Revised 12.29.11)
COMPONENTS NOT SHOWN TO SCALE



www.keithwalkingfloor.com



KEITH Mfg. Co.
WORLD HEADQUARTERS
(800) 547-6161
(541) 475-3802
(541) 475-2169 fax
sales@keithwalkingfloor.com