

# 695MH EPIC

## Rugged Self-Propelled Carrier

KNUCKLEBOOM LOADERS > SELF-PROPELLED

SCRAP



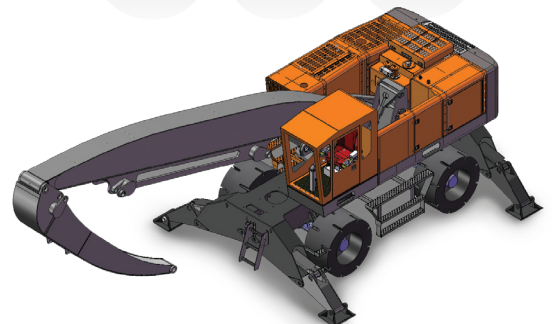
### Introducing the Barko 695MH EPIC Rugged Self-Propelled Carrier

Dependable. Exceptional. AWESOME.  
That's what customers say about the Barko 695MH EPIC Rugged Self-Propelled Carrier. It's equipped with EPIC, an advanced electronic control system, to make the 695MH POWERFUL. THRIFTY. SMART. It provides the best fuel efficiency, work productivity, and the lowest total cost of operation of any other product in its class. It is BEAUTIFUL, but don't let that fool you. The power and swing torque of the 695MH EPIC Rugged Self-Propelled Carrier makes it a BEAST capable of delivering more loads every day. The 695MH EPIC Loader performs harder and delivers the results you expect, all while using less fuel and providing more comfort. There's nothing better than a Barko – Guaranteed!



Visit our website at:  
[www.barko.com](http://www.barko.com)  
to read customer testimonials

# 695



**BARKO** HYDRAULICS, LLC

One Banks Avenue | Superior, WI 54880 | Ph: 715.392.5641 | Fx: 715.392.3931

WWW.BARKO.COM

# 695MH EPIC

## Rugged Self-Propelled Carrier

KNUCKLEBOOM LOADERS > SELF-PROPELLED

SCRAP

### MAXIMUM LIFT CAPACITY

51' 0" (15.5 m) straight boom, less attachment.

#### Front Lift Capacity

Radius	Lift
15' (4.6 m)	33,160 lbs. (15,041 kg)
20' (6.1 m)	31,410 lbs. (13,794 kg)
25' (7.6 m)	23,870 lbs. (10,827 kg)
30' (9.1 m)	19,570 lbs. (8,877 kg)
35' (10.7 m)	16,500 lbs. (7,484 kg)
40' (12.2 m)	14,220 lbs. (6,450 kg)
45' (13.7 m)	12,480 lbs. (5,661 kg)
50' (15.2 m)	9,180 lbs. (4,164 kg)

#### Side Lift Capacity

Radius	Lift
15' (4.6 m)	33,160 lbs. (15,041 kg)
20' (6.1 m)	30,410 lbs. (13,794 kg)
25' (7.6 m)	23,870 lbs. (10,827 kg)
30' (9.1 m)	19,160 lbs. (8,691 kg)
35' (10.7 m)	15,980 lbs. (7,248 kg)
40' (12.2 m)	13,370 lbs. (6,065 kg)
45' (13.7 m)	10,640 lbs. (4,826 kg)
50' (15.2 m)	8,540 lbs. (3,874 kg)

### BOOM DATA

Boom	51' 0" (15.5 m)	46' 0" (14.0 m)
Main	29' 0" (8.8 m)	29' 0" (8.8 m)
Stick	22' 0" (6.7 m)	17' 4" (5.3 m)

Boom structure: All welded construction with fabricated box type design. Bronze bushings with grease grooves at boom pivot points.

### BOOM REACH

Mounted on rubber tire carrier.

Boom	51' 0" (15.5 m)	46' 0" (14.0 m)
Horizontal	51' 0" (15.5 m)	46' 5" (14.1 m)
Vertical	65' 4" (19.9 m)	50' 9" (15.5 m)

### CYLINDERS

Hydraulic cylinders with wear rings on pistons and glands for extended life.

All cylinders are made of heavy wall steel tubing. Induction hardened cylinder rods with heavy chrome plating.

Main boom: Dual 6" x 47" (152 mm x 1194 mm) with 4" (102 mm) rod.

Stick boom: Dual 6" x 41" (152 mm x 1041 mm) with 4" (102 mm) rod.

Hose break protection valves.

### POWER SOURCE

Isuzu 6HK 7.8L - Tier 3 220 HP (164 kW) @ 1800 RPM.

24V electric system.

Fuel reservoir: 125 gallon (475 L).

### HYDRAULIC SYSTEM

161 gallon (610 L) hydraulic oil reservoir with return line filter, shut off valve on pump suction lines.

Main Pumps: two variable displacement piston pump producing 112 GPM (425 LPM).

Swing Pump: hydrostatic axial piston pump producing 43 GPM (162 LPM) at 3600 PSI (248 BAR).

Main system operating pressure: 4,350 PSI (300 BAR).

### HYDRAULIC SYSTEM (CONT.)

Heavy wall tubing and multi-wire braided hose throughout system.

Quick disconnect diagnostic ports.

Auto reversing hydraulic cooling fan.

Continuous rotation.

### SWING SYSTEM

Continuous rotation on 54" (1372 mm) internal tooth turntable bearing.

Swing speed 7 RPM - Hydrostatic Power transmitted through dual piston motors and planetary gearboxes.

3,600 PSI (248 BAR) operating pressure.

Swing torque: 55,211 ft. lbs. (74.8 kN-m)

Tail Swing: 121" (3.07m)

### OPERATOR'S CAB

F.O.P.S. certified. 38-1/2" x 55" (978 mm x 1,397 mm) forward sloping pressurized cab with sound suppression insulation.

Roof window, sliding side windows, rear egress window, with tinted glass on all windows.

Windshield wipers, washer, and dome light.

Air ride, heated seat with arm rests.

Dual joystick controls.

Steering wheel and foot pedal travel.

Dash console with cab accessory switches and start/stop controls all located for easy access.

Digital warning lights, monitor system and gauges.

AM/FM radio/ CD player/ CB radio

Rear hinged swing out door.

(4) 55 Watt DC halogen cab lights

Climate controlled heating and air conditioning.

### UNDERCARRIAGE

Hydrostatic Drive: Two speed, 4WD, powershift transmission powered by a single variable displacement piston motor.

Axles: Planetary drive axles front and rear. Front oscillating 12 degrees in frame, rear rigid to frame.

Wheels: 24" x 48" OD solid tires.

Service Brakes: Hydrostatic-dynamic braking mechanism.

Secondary Brakes: Hydraulic multi-disc brakes on all four wheels operated by foot pedal.

Parking Brakes: SAHR brake acting on transmission.

Travel alarm.

Steering: Hydraulic two wheel steering.

Stabilizers: Front and rear mounted fold-down type hydraulic stabilizer legs with a 14' 9" (4.5 m) spread, four double acting cylinders with lock valves, 8" bore x 22" stroke (203 mm x 558 mm) with 4" (101 mm) rods.

Protective covers over stabilizer cylinders.

Maximum Speed:

High: 12 MPH (19 KPH).

Low: 3 MPH (4.8 KPH)

Maximum Gradeability: 37%.

Wheelbase: 9' 10" (3.0 m).

Turning Radius: 29' 8" (9.04 m) outside tires.

### ELEVATING CAB

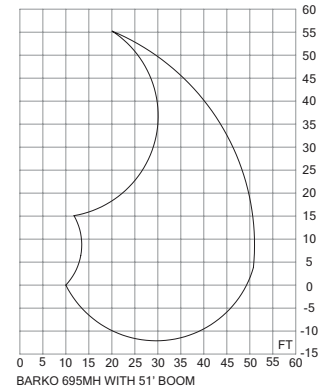
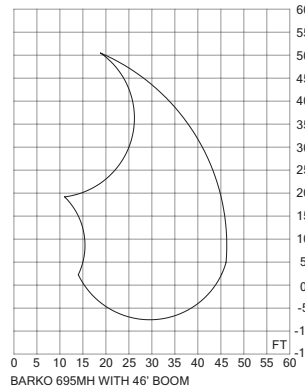
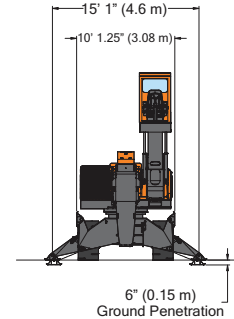
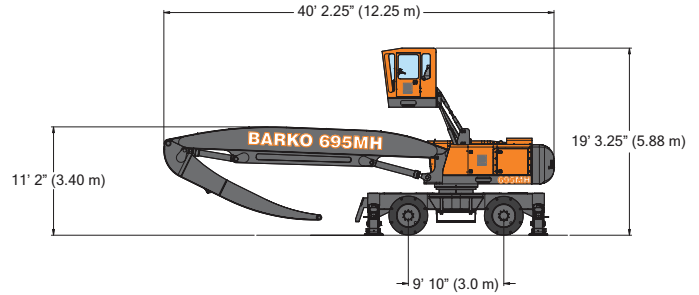
95" (2.4m) of travel.

Maximum Height: 18' (5.4m) eye level.

Proportional control on joystick.

Hydraulic suspension.

Manual cab lowering valve in cab and on platform.



### MISCELLANEOUS

Weight with standard equipment, cast steel counterweight & oil: 87,700 lbs. (39,780 kg)

(not including attachment)

Equipment greased and hydraulic tank filled.

Central greasing system.

### OPTIONS

43' Live Heel Boom

46' Straight Boom (standard)

51' (15.5m) Straight Boom (optional)

Operator's Cab - front window guard

Grapples - orange peel 3/4 yd or 1 yd

Generator packages - 15 to 33kw

Magnets - 48" to 67" diameter

Boom lights

Cold weather operating package

Automatic greasing system

Axle oscillation locking cylinders



**BARKO HYDRAULICS, LLC**

One Banks Avenue | Superior, WI 54880 | Ph: 715.392.5641 | Fx: 715.392.3931 | www.barko.com